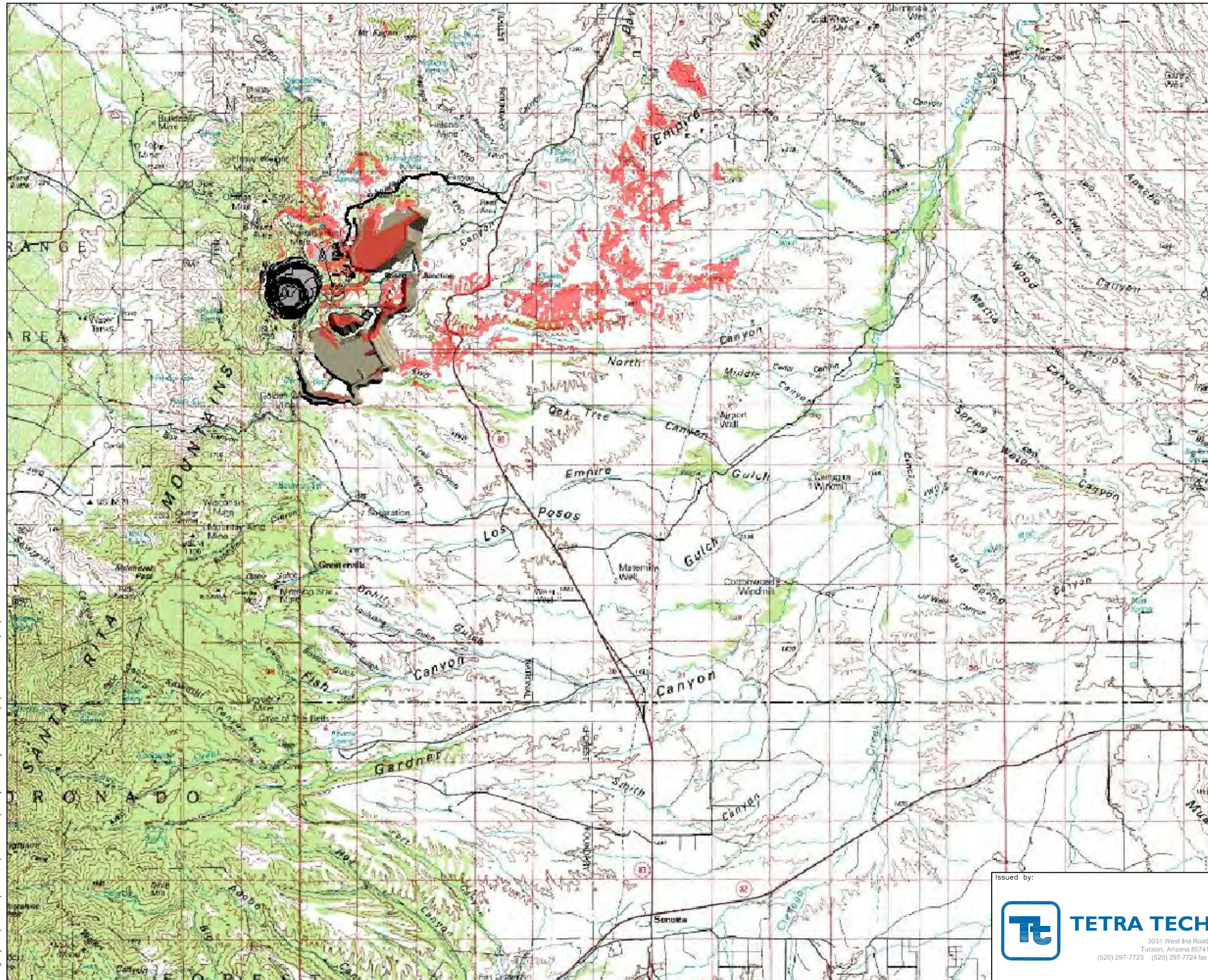


M:\projects\1049\10\forest_request_2008\3-3_year_5.dwg PRINTED: 2/26/08 BY: MICHAELA



LEGEND:



NOT TO SCALE

Issued by:



TETRA TECH

3031 West Ina Road
Tucson, Arizona 85741
(520) 297-7723 (520) 297-7724 fax

Title:

**VIEWSHED ANALYSIS AT
TOP OF COARSE ORE STOCKPILE,
YEAR 5**



REVISION

Project: ROSEMONT

Project no.: 320614

Figure no.:

3-3

Location: PIMA COUNTY, ARIZONA

Date: 06/07