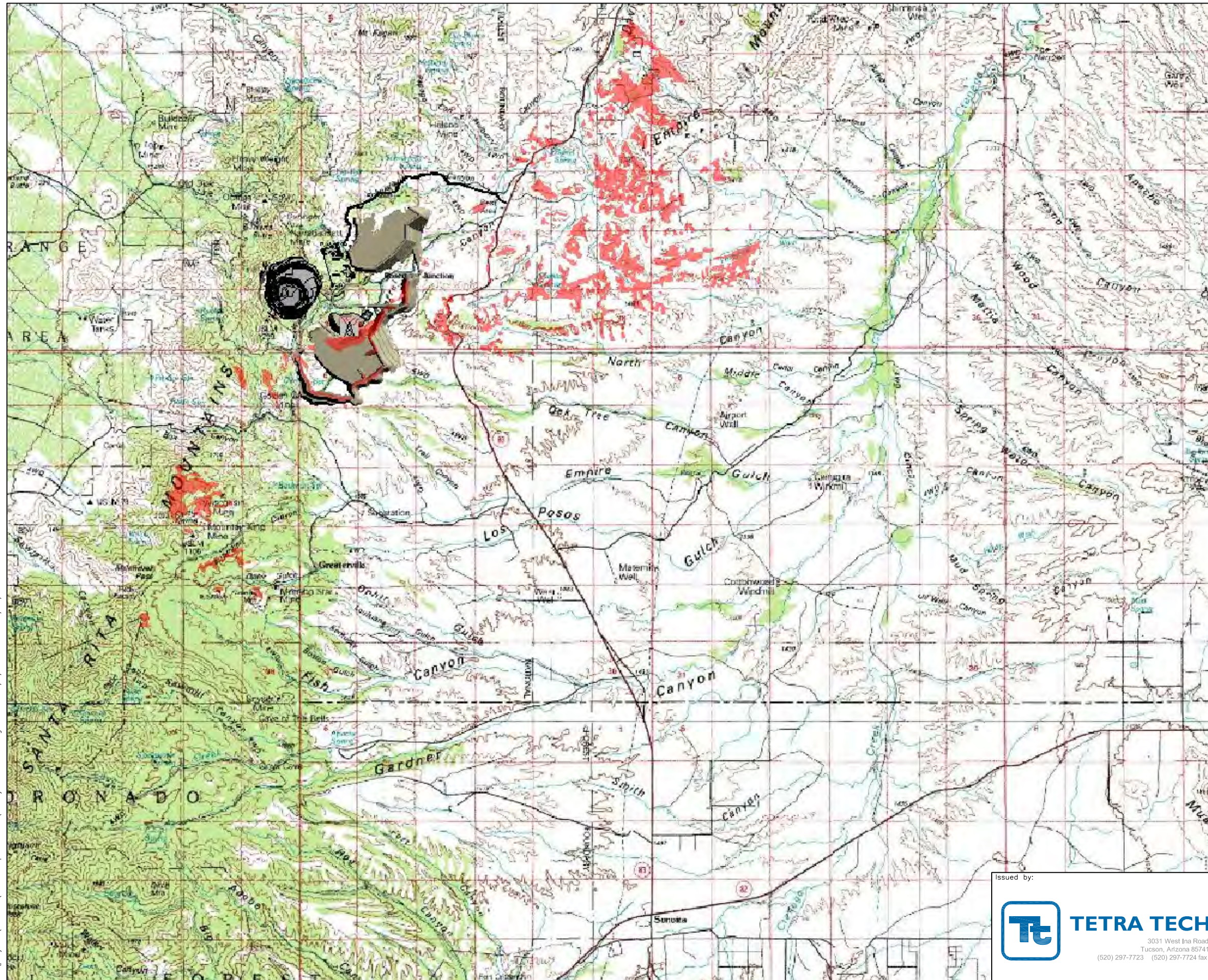


M:\projects\1049\10\forest_request_2008\3-5_year_5_leach.dwg PRINTED:2/26/08 BY:MICHAELA



LEGEND:



VIEWSHED POINT



NOT TO SCALE

Issued by:



TETRA TECH

3031 West Ina Road
Tucson, Arizona 85741
(520) 297-7723 (520) 297-7724 fax

Title:

**VIEWSHED ANALYSIS AT
TOP OF THE HEAP LEACH
PAD, YEAR 5**



REVISION

Project: ROSEMONT

Project no.: 320614

Figure no.:

3-5

Location: PIMA COUNTY, ARIZONA

Date: 06/07